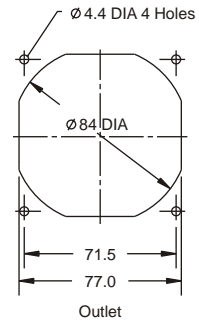
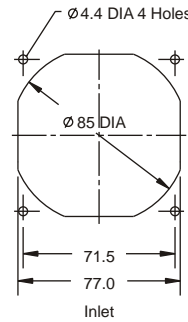
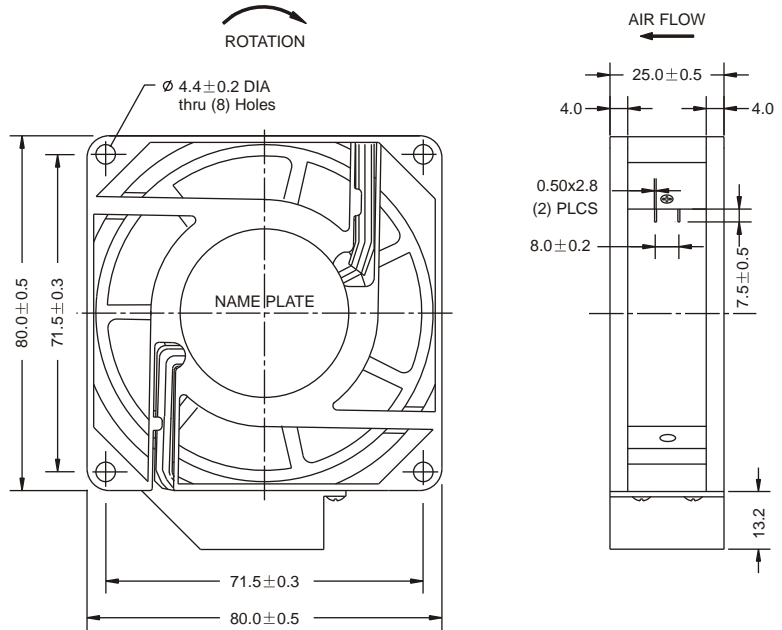


AC 8025 SERIES AXIAL FAN (High Air Flow)

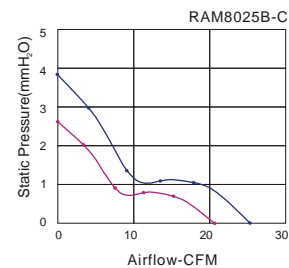
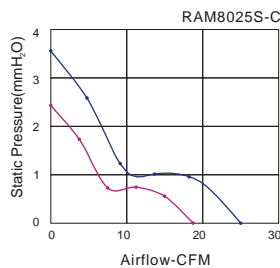
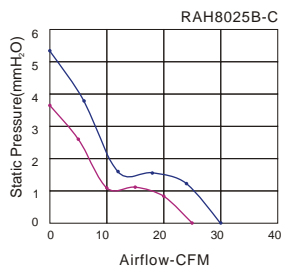
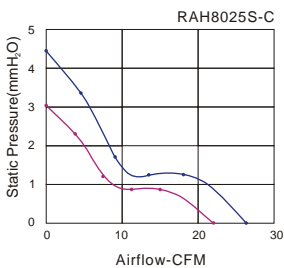


Size: 80mmx80mmx25mm  
 Airflow: 31~51m<sup>3</sup>/hr  
 18~30CFM  
 Weight: 260g  
 Noise: 21~31dBA  
 Impeller: PA6 UL94V-0 Reinforced Plastic  
 Frame: Aluminum Alloy  
 Terminals: 0.5mm  
 Lead Wire: AWG#22 UL 1007  
 (Optional)  
 Motor: Capacitor-Run Induction Motor  
 Safety: UL.CUL.TUV.CE  
 Operation Temperature: -10°C~+55°C



Unit:mm

Model	Bearing System	Voltage VAC	Freq. Hz	Current A	Power W	Speed RPM	Noise dBA	Air Flow		Static Pressure (mmH <sub>2</sub> O)	Weight Gram
								M <sup>3</sup> /hr	CFM		
RAH8025S1-C	Sleeve	220~240	50/60	0.08/0.09	17/19	2500/3000	24/29	37/44	22/26	3.0/4.4	260
RAM8025S1-C		220~240	50/60	0.07/0.07	15/15	2150/2800	21/25	31/43	18/25	2.2/3.5	
RAH8025S2-C		100~125	50/60	0.13/0.14	15/17	2500/3000	24/29	37/44	22/26	3.0/4.4	
RAM8025S2-C		100~125	50/60	0.10/0.10	12/12	2150/2800	21/25	31/43	18/25	2.2/3.5	
RAH8025B1-C	Ball	220~240	50/60	0.08/0.09	17/19	2800/3350	27/31	43/51	25/30	3.6/5.3	
RAM8025B1-C		220~240	50/60	0.07/0.07	15/15	2350/2850	23/27	36/43	21/25	2.6/3.8	
RAH8025B2-C		100~125	50/60	0.13/0.14	15/17	2800/3350	27/31	43/51	25/30	3.6/5.3	
RAM8025B2-C		100~125	50/60	0.10/0.10	12/12	2350/2850	23/27	36/43	21/25	2.6/3.8	



Key  
 — 60Hz  
 — 50Hz